

# FS Pulse Jet Baghouse Dust Collectors and Bin Vents

**Economical solutions for dust collection and bin venting applications.**

- Side filter bag removal allows for installation in low headroom applications.
- All-welded construction provides increased durability and air/water integrity.
- Integral fan option up to 75 hp helps to reduce space requirements.
- Unique cleaning system minimizes moisture and particulate issues in pulse valves.
- Collectors with up to 225 filter bags require only one dirty air inlet, one clean air outlet, and one hopper, resulting in reduced ducting and hopper outlet costs.



**121FS10  
Pulse Jet Baghouse Dust Collector  
with integrated fan, silencer  
and dumpster discharge**



**25FS8 Bin Vent  
with integrated fan**

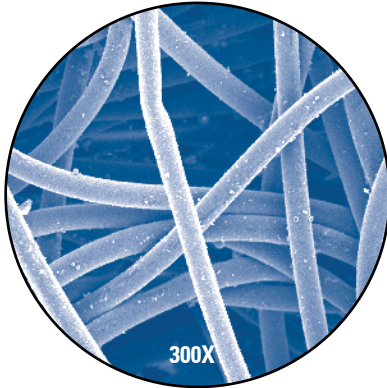
# FS Pulse Jet Baghouse Dust Collectors and Bin Vents

## Dura-Life™ Filter Bags — A breakthrough for bag users.

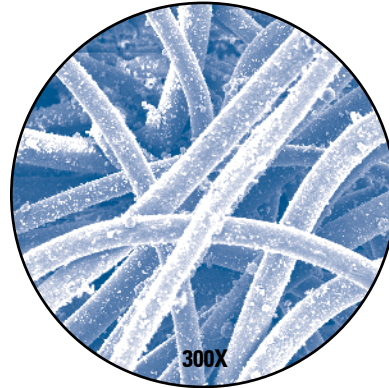
Dura-Life™\* polyester filter bag media is engineered with a unique hydroentanglement process that uses water to blend the fibers, which creates a filter bag that has smaller pores, better surface loading and better cleaning. For this reason, Dura-Life filter bags provide:

- Two to three times longer filter bag life
- Fan energy savings due to lower pressure drop
- Reduced maintenance and replacement filter bag costs due to fewer bag changeouts
- Thirty percent fewer emissions based on EPA tests

**Dura-Life Bag-Clean Air Side**

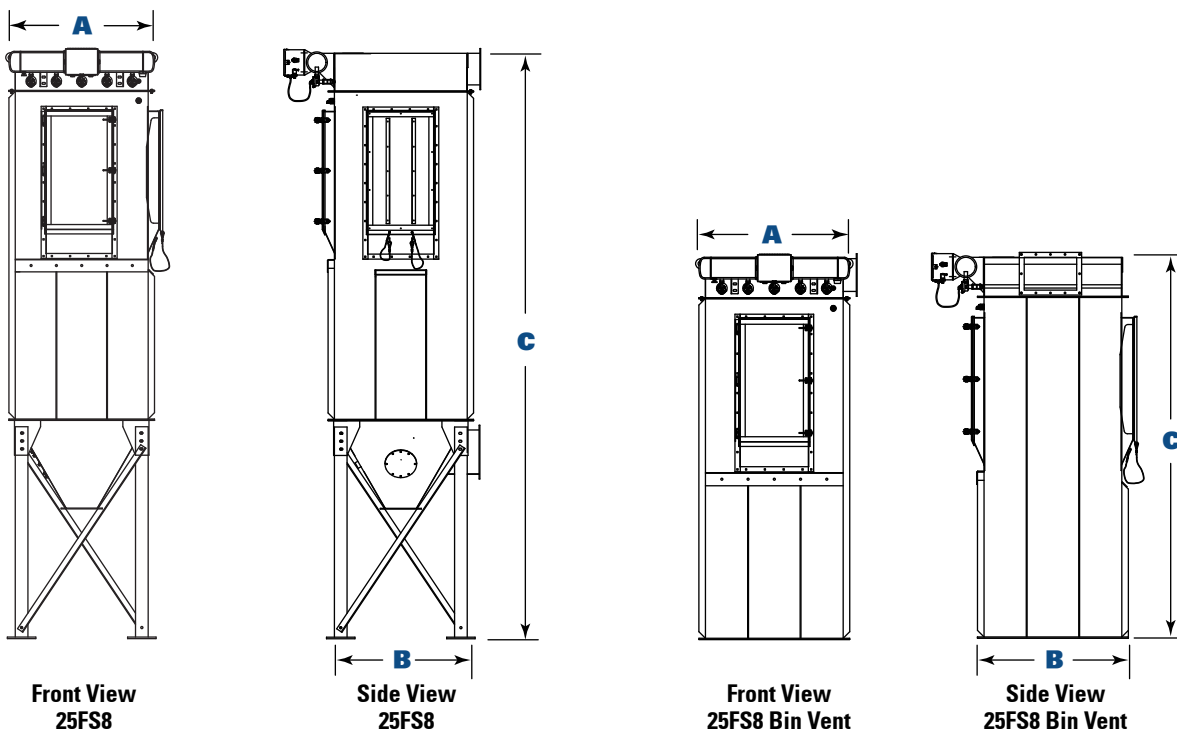


**Polyester Bag-Clean Air Side**



These photos were taken with a scanning electron microscope of bag media used in a collector that was filtering fly ash. The bags were removed after 2,700 hours of use. Air-to-media ratio was 4.5 to 1. Pressure drop after 2,700 hours of operation was 6 in. on polyester bags and 2 in. on Dura-Life.

## Dimensions & Specifications



\* Dura-Life bags are made with Durapex® media manufactured by Polymer Group, Inc.

# FS Pulse Jet Baghouse Dust Collectors and Bin Vents

## Dimensions & Specifications

Model	Nominal Airflow Range* (cfm)	Cloth Area (ft <sup>2</sup> )	Length of Filter Bags (ft)	Shipping Weight (lbs)	Dimensions (inches)		
					A	B	C
9FS4	240 - 600	60	4	1,200	30	30	119.6
9FS6	360 - 900	90	6	1,300	30	30	143.6
9FS8	480 - 1,200	120	8	1,400	30	30	167.6
16FS4	428 - 1,070	107	4	1,500	38	38	126.9
16FS6	640 - 1,600	160	6	1,600	38	38	150.9
16FS8	852 - 2,130	213	8	1,800	38	38	174.9
25FS4	688 - 1,670	167	4	1,800	46	46	133.6
25FS6	1,000 - 2,500	250	6	2,000	46	46	157.6
25FS8	1,322 - 3,330	333	8	2,200	46	46	181.6
36FS4	960 - 2,400	240	4	2,100	54	54	140.7
36FS6	1,440 - 3,600	360	6	2,300	54	54	164.7
36FS8	1,920 - 4,800	480	8	2,600	54	54	188.7
49FS4	1,308 - 3,270	327	4	2,500	62	62	148.2
49FS6	1,960 - 4,900	490	6	2,800	62	62	172.2
49FS8	2,612 - 6,530	653	8	3,100	62	62	196.2
64FS6	2,560 - 6,400	640	6	3,200	70	70	179.1
64FS8	3,412 - 8,530	853	8	3,600	70	70	203.1
64FS10	4,264 - 10,660	1066	10	4,000	70	70	227.1
81FS8	4,320 - 10,800	1080	8	5,500	82	82	221.8
81FS10	5,400 - 13,500	1350	10	6,000	82	82	245.8
81FS12	6,480 - 16,200	1620	12	6,500	82	82	269.8
100FS8	5,332 - 13,330	1333	8	6,250	90	90	228.8
100FS10	6,668 - 16,670	1667	10	6,750	90	90	252.8
100FS12	8,000 - 20,000	2000	12	7,250	90	90	276.8
121FS8	6,452 - 16,130	1613	8	7,250	98	98	236.9
121FS10	8,068 - 20,170	2017	10	8,000	98	98	260.9
121FS12	9,680 - 24,200	2420	12	8,500	98	98	284.9
144FS8	7,680 - 19,200	1920	8	8,250	106	106	243.8
144FS10	9,600 - 24,000	2400	10	8,750	106	106	267.8
144FS12	11,520 - 28,800	2880	12	9,500	106	106	291.8
169FS8	9,012 - 22,530	2253	8	9,000	114	114	250.8
169FS10	11,268 - 28,170	2817	10	10,000	114	114	274.8
169FS12	13,520 - 33,800	3380	12	10,750	114	114	298.8
196FS8	10,452 - 26,130	2613	8	10,000	122	122	257.7
196FS10	13,068 - 32,670	3267	10	10,750	122	122	281.7
196FS12	15,680 - 39,200	3920	12	11,750	122	122	305.7
225FS8	12,000 - 30,000	3000	8	11,000	130	130	264.6
225FS10	15,000 - 37,500	3750	10	12,000	130	130	288.6
225FS12	18,000 - 45,000	4500	12	13,000	130	130	312.6
252FS8	13,440 - 33,600	3360	8	N/A**	168	122	286.0
252FS10	16,800 - 42,000	4200	10	N/A**	168	122	310.0
252FS12	20,160 - 50,400	5040	12	N/A**	168	122	334.0
336FS8	17,920 - 44,800	4480	8	N/A**	224	122	286.0
336FS10	22,400 - 56,000	5600	10	N/A**	224	122	310.0
336FS12	26,880 - 67,200	6720	12	N/A**	224	122	334.0
<b>Bin Vent Model</b>							
9FS4	180 - 420	60	4	500	30	30	69.6
9FS6	270 - 630	90	6	600	30	30	93.6
9FS8	360 - 840	120	8	800	30	30	117.6
16FS4	321 - 749	107	4	700	38	38	69.6
16FS6	480 - 1,120	160	6	900	38	38	93.6
16FS8	639 - 1,491	213	8	1,100	38	38	117.6
25FS4	501 - 1,169	167	4	1,000	46	46	69.6
25FS6	750 - 1,750	250	6	1,200	46	46	93.6
25FS8	999 - 2,331	333	8	1,400	46	46	117.6
36FS4	720 - 1,680	240	4	1,200	54	54	69.6
36FS6	1,080 - 2,520	360	6	1,400	54	54	93.6
36FS8	1,440 - 3,360	480	8	1,700	54	54	117.6
49FS4	981 - 2,289	327	4	1,500	62	62	70.1
49FS6	1,470 - 3,430	490	6	1,800	62	62	94.1
49FS8	1,959 - 4,571	653	8	2,100	62	62	118.1
64FS6	1,920 - 4,480	640	6	2,100	70	70	94.1
64FS8	2,559 - 5,971	853	8	2,500	70	70	118.1
64FS10	3,198 - 7,462	1066	10	2,800	70	70	142.1

\* Based on clean filter bags.

\*\* Contact home office.

# FS Pulse Jet Baghouse Dust Collectors and Bin Vents

## Standard Features & Equipment Options

		Standard	Optional
<b>Collector Design</b>			
Side Bag Removal		X	
All-Welded, Carbon Steel Construction, 12 Gauge		X	
Rated 17-inch Water Gauge		X	
Compressed Air Manifold with Drain		X	
Flanged Clean Air Outlet		X	
High Performance Venturis		X	
Easy-Lift Lifting Ears		X	
Integrated Exhaust Weatherhood			X
Service Platform and Ladder			X
Stainless Steel Construction			X
Factory Mounted Direct Drive Fans with Outlet Hood and Birdscreen			X
High Performance Fan Silencer			X
Slide Gate Fan Damper			X
Shaving Control System (SCS)			X
<b>Filter Bags and Cages</b>			
Dura-Life Twice the Life Polyester Bags		X	
Stainless Steel Bag Clamps		X	
Galvanized Cages		X	
Variety of Bag Media Options			X
<b>Paint System</b>			
Prime Coated Interior		X	
Liquid Alkyd Finish Exterior		X	
Standard Colors: Torit Blue or Storm White		X	
Special Colors			X
<b>Hopper Design (Not available on Bin Vent)</b>			
60° Hopper		X	
Flanged Dirty Air Inlet		X	
Inlet Deflector		X	
Flanged Hopper Discharge		X	
Hopper Access Panel		X	
Coupling for High Level Indicator		X	
High Level Indicator			X
<b>Hopper Discharge (Not available on Bin Vent)</b>			
Dumpster Discharge with Pneumatic Lid and Controls			X
Rack and Pinion Gate			X
55-Gallon Drum Cover			X
Various Rotary Valve Options			X
<b>Support Structure (Not available on Bin Vent)</b>			
36" Clearance Leg Pack		X	
Custom Clearance Leg Packs			X
<b>Electrical Controls, Gauges and Enclosures</b>			
Goyen Diaphragm Valves		X	
120V Timerboard and Solenoid Valves in NEMA 4 Enclosure		X	
Magnehelic®* Gauge		X	
Photohelic®* Gauge			X
Photohelic Gauge (Weatherproof)			X
Delta P Control Panel without Timer			X
<b>Safety Features</b>			
4x4 Bag Safety Grid (bin vent units only)		X	
Sprinkler Access Ports			X
Sprinkler Pack Assembly			X
Explosion Vents			X
<b>Warranty</b>			
1-Year Warranty		X	

\* Magnehelic and Photohelic are registered trademarks of Dwyer Instruments, Inc.



Donaldson Company, Inc.  
Industrial Air Filtration  
P.O. Box 1299  
Minneapolis, MN 55440  
Tel 800-365-1331(USA)  
Tel 800-343-3639 (within Mexico)  
donaldson@donaldson.com  
www.donaldson.com



Significantly improve the performance of your collector with genuine Donaldson Torit replacement filters and parts.

**Browse our catalog at [www.donaldson.com](http://www.donaldson.com)**

Information in this document is subject to change without notice.

© 2008 Donaldson Co., Inc.  
Printed in U.S.A. on recycled paper

Data Sheet FS Pulse Jet Baghouse & Bin Vent (11/08)