

FT Pulse Jet Baghouse Dust Collectors

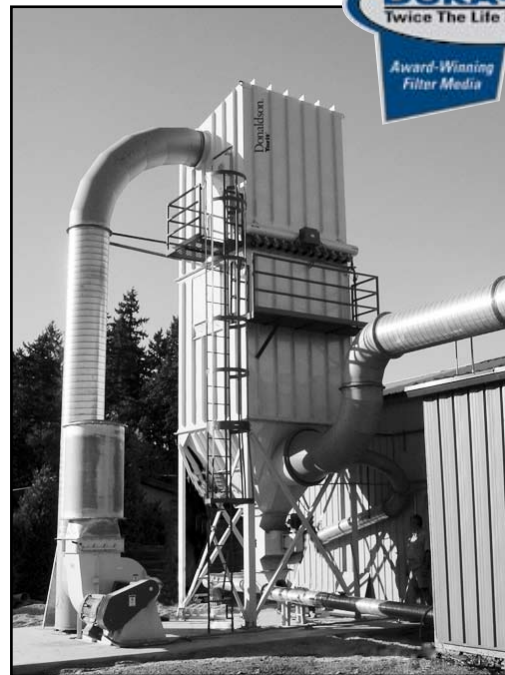
Models FTD (Without Walk-In Plenum) and FTP (Walk-In Plenum)

Easy and dependable operation for high-volume dust collection applications.

- Clean side bag removal provides easier filter bag service.
- Optional walk-in plenum allows for filter bag servicing in adverse weather conditions (FTP).
- All-welded construction provides increased durability and air/water integrity.
- Integral fan option up to 75 hp helps to reduce space requirements.
- Unique cleaning system minimizes moisture and particulate issues in pulse valves.
- Collectors with up to 225 filter bags require only one dirty air inlet, one clean air outlet, and one hopper, resulting in reduced ducting and hopper outlet costs.



144FTD6
Without Walk-In Plenum



144FTP8
Walk-In Plenum

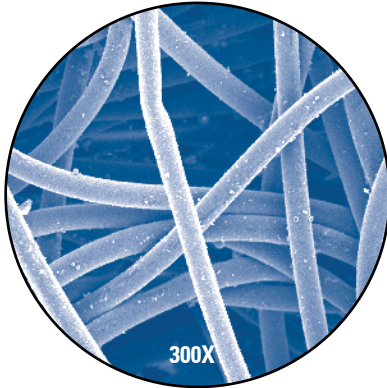
FT Pulse Jet Baghouse

Dura-Life™ Filter Bags — A breakthrough for bag users.

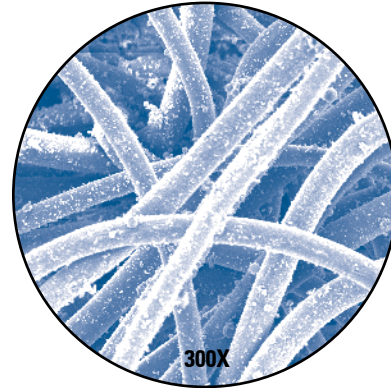
Dura-Life™* polyester filter bag media is engineered with a unique hydroentanglement process that uses water to blend the fibers, which creates a filter bag that has smaller pores, better surface loading and better cleaning. For this reason, Dura-Life filter bags provide:

- Two to three times longer filter bag life
- Fan energy savings due to lower pressure drop
- Reduced maintenance and replacement filter bag costs due to fewer bag changeouts
- Thirty percent fewer emissions based on EPA tests

Dura-Life Bag-Clean Air Side

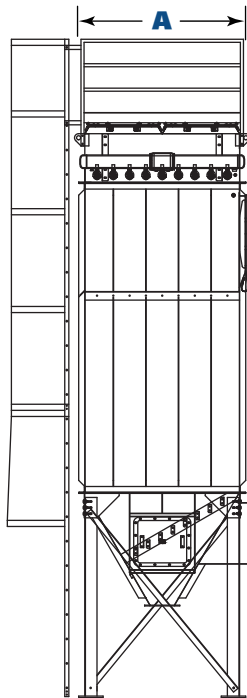


Polyester Bag-Clean Air Side

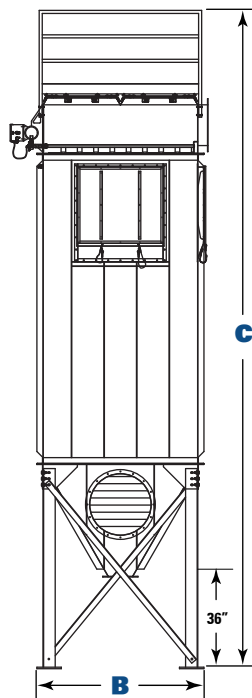


These photos were taken with a scanning electron microscope of bag media used in a collector that was filtering fly ash. The bags were removed after 2,700 hours of use. Air-to-media ratio was 4.5 to 1. Pressure drop after 2,700 hours of operation was 6 in. on polyester bags and 2 in. on Dura-Life.

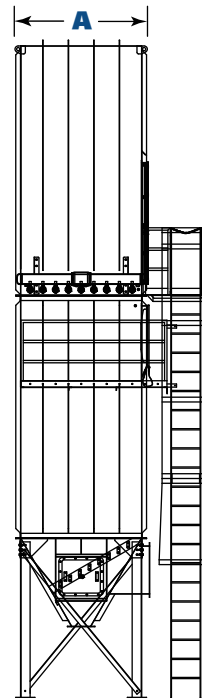
Dimensions & Specifications



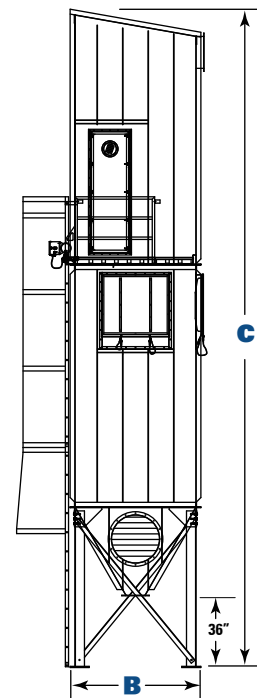
**Front View
81FTD8**



**Side View
81FTD8**



**Front View
81FTP8
w/Walk-In Plenum**



**Side View
81FTP8
w/Walk-In Plenum**

* Dura-Life bags are made with Durapex® media manufactured by Polymer Group, Inc.

FT Pulse Jet Baghouse

Dimensions & Specifications

Model	Nominal Airflow Range* (cfm)	Cloth Area (ft ²)	Length of Filter Bags (ft)	FTD Shipping Weight (lbs)	FTP Shipping Weight (lbs)	FTD Dimensions (inches)			FTP Dimensions (inches)		
						A	B	C	A	B	C
9FT4	240 - 600	60	4	1,300	—	30	30	163	—	—	—
9FT6	360 - 900	90	6	1,400	—	30	30	187	—	—	—
9FT8	480 - 1,200	120	8	1,500	—	30	30	211	—	—	—
16FT4	428 - 1,070	107	4	1,600	—	38	38	170	—	—	—
16FT6	640 - 1,600	160	6	1,800	—	38	38	194	—	—	—
16FT8	852 - 2,130	213	8	1,900	—	38	38	218	—	—	—
25FT4	688 - 1,670	167	4	1,900	—	46	46	177	—	—	—
25FT6	1,000 - 2,500	250	6	2,100	—	46	46	201	—	—	—
25FT8	1,322 - 3,330	333	8	2,300	—	46	46	225	—	—	—
36FT4	960 - 2,400	240	4	2,200	—	54	54	184	—	—	—
36FT6	1,440 - 3,600	360	6	2,400	—	54	54	208	—	—	—
36FT8	1,920 - 4,800	480	8	2,700	—	54	54	232	—	—	—
49FT4	1,308 - 3,270	327	4	2,600	—	62	62	191	—	—	—
49FT6	1,960 - 4,900	490	6	2,900	—	62	62	215	—	—	—
49FT8	2,612 - 6,530	653	8	3,200	—	62	62	239	—	—	—
64FT6	2,560 - 6,400	640	6	3,400	—	70	70	222	—	—	—
64FT8	3,412 - 8,530	853	8	3,800	—	70	70	246	—	—	—
64FT10	4,264 - 10,660	1066	10	4,100	—	70	70	271	—	—	—
81FT8	4,320 - 10,800	1080	8	5,750	6,750	82	82	265	82	82	304.1
81FT10	5,400 - 13,500	1350	10	6,250	7,500	82	82	289	82	82	352.1
81FT12	6,480 - 16,200	1620	12	6,750	8,250	82	82	313	82	82	400.1
100FT8	5,332 - 13,330	1333	8	6,500	7,500	90	90	272	90	90	317.5
100FT10	6,668 - 16,670	1667	10	7,000	8,500	90	90	296	90	90	365.5
100FT12	8,000 - 20,000	2000	12	7,500	9,250	90	90	320	90	90	413.5
121FT8	6,452 - 16,130	1613	8	7,500	8,750	98	98	280	98	98	324.6
121FT10	8,068 - 20,170	2017	10	8,250	9,750	98	98	304	98	98	372.6
121FT12	9,680 - 24,200	2420	12	8,750	10,750	98	98	328	98	98	420.6
144FT8	7,680 - 19,200	1920	8	8,250	9,750	106	106	287	106	106	329.6
144FT10	9,600 - 24,000	2400	10	9,000	11,000	106	106	311	106	106	377.6
144FT12	11,520 - 28,800	2880	12	9,750	12,000	106	106	335	106	106	425.6
169FT8	9,012 - 22,530	2253	8	9,250	10,750	114	114	294	114	114	342.9
169FT10	11,268 - 28,170	2817	10	10,000	12,000	114	114	318	114	114	390.9
169FT12	13,520 - 33,800	3380	12	11,000	13,500	114	114	342	114	114	438.9
196FT8	10,452 - 26,130	2613	8	10,250	11,750	122	122	301	122	122	349.8
196FT10	13,068 - 32,670	3267	10	11,000	13,250	122	122	325	122	122	397.8
196FT12	15,680 - 39,200	3920	12	12,000	10,000	122	122	349	122	122	445.8
225FT8	12,000 - 30,000	3000	8	11,250	13,500	130	130	308	130	130	358.2
225FT10	15,000 - 37,500	3750	10	12,250	15,000	130	130	332	130	130	406.2
225FT12	18,000 - 45,000	4500	12	13,250	16,500	130	130	356	130	130	454.2
252FT8	13,440 - 33,600	3360	8	15,000	17,500	122	168	311.3	122	168	361.1
252FT10	16,800 - 42,000	4200	10	16,000	19,000	122	168	335.3	122	168	409.1
252FT12	20,160 - 50,400	5040	12	17,000	20,500	122	168	359.3	122	168	457.1
336FT8	17,920 - 44,800	4480	8	18,200	21,200	122	224	311.3	122	224	361.1
336FT10	22,400 - 56,000	5600	10	19,700	23,200	122	224	335.3	122	224	409.1
336FT12	26,880 - 67,200	6720	12	21,200	25,200	122	224	359.3	122	224	457.1

* Based on clean filter bags.

FT Pulse Jet Baghouse

Standard Features & Equipment Options

	Standard	Optional		Standard	Optional
Collector Design					
Clean Side Bag Removal	X				
All-Welded, Carbon Steel Construction, 12 Gauge	X				
Heavy-Duty 3/16-in Plate Tubesheet	X				
Rated 17-inch Water Gauge	X				
Compressed Air Manifold with Drain	X				
Flanged Clean Air Outlet	X				
High Performance Venturis	X				
Easy-Lift Lifting Ears	X				
Walk-In Clean Air Plenum with 10° Sloped Roof (FTP)	X				
Service Railing on Top of Collector (FTD)	X				
Integrated Exhaust Weatherhood		X			
Service Platform and Ladder		X			
Stainless Steel Construction		X			
Mountable Direct Drive Fans with Outlet Hood and Birdscreen		X			
High Performance Fan Silencer		X			
Slide Gate Fan Damper		X			
Filter Bags and Cages					
Dura-Life Twice the Life Polyester Snap-In Filter Bags	X				
Galvanized Cages	X				
Variety of Bag Media Options		X			
Paint System					
Prime Coated Interior	X				
Liquid Alkyd Finish Exterior	X				
Standard Colors: Torit Blue or Storm White	X				
Special Colors		X			
Hopper Design					
60° Pyramid Hopper		X			
Flanged Dirty Air Inlet		X			
Inlet Deflector		X			
Flanged Hopper Discharge		X			
Hopper Access Panel		X			
Coupling for High Level Indicator		X			
High Level Indicator				X	
Hopper Discharge					
Dumpster Discharge with Pneumatic Lid and Controls					X
Rack and Pinion Gate					X
55-Gallon Drum Cover					X
Various Rotary Valve Options					X
Support Structure					
36" Clearance Leg Pack		X			
Custom Clearance Leg Packs					X
Electrical Controls, Gauges and Enclosures					
Goyen Diaphragm Valves		X			
120V Timerboard and Solenoid Valves in NEMA 4 Enclosure		X			
Magnehelic®* Gauge		X			
Photohelic®* Gauge					X
Photohelic Gauge (Weatherproof)					X
Delta P Control Panel without Timer					X
Safety Features					
4x4 Bag Safety Grid (bin vent units only)		X			
Sprinkler Access Ports					X
Sprinkler Pack Assembly					X
Explosion Vents					X
Warranty					
1-Year Warranty		X			

* Magnehelic and Photohelic are registered trademarks of Dwyer Instruments, Inc.



Donaldson Company, Inc.
Industrial Air Filtration
P.O. Box 1299
Minneapolis, MN 55440

Tel 800-365-1331(USA)
Tel 800-343-3639 (within Mexico)
donaldson@donaldson.com
www.donaldson.com



Significantly improve the performance of your collector with genuine Donaldson Torit replacement filters and parts.

Browse our catalog at www.donaldson.com

Information in this document is subject to change without notice.

© 2008 Donaldson Co., Inc.
Printed in U.S.A. on recycled paper

Data Sheet FT Pulse Jet Baghouse (11/08)